

FOR IMMEDIATE RELEASE:

# MFA THESIS EXHIBITION

## MAY 2 - 19, 2013

MEDFORD, MA - The Tufts University Art Gallery at the Shirley and Alex Aidekman Arts Center presents the third of three MFA Thesis Exhibitions for the 2012-2013 academic year, works by Master of Fine Arts candidates in the joint degree program of Tufts University and the School of the Museum of Fine Arts, Boston. This exhibition features artists Case Hathaway-Zepeda, Paul Ishii, Ryan Kish, Liza Lynch, Vanessa Michalak, John Neylan, and D.M.H. R.I.C.H.M.O.N.D. x2. Their work will be on view in the Tisch Gallery in the Aidekman Arts Center from May 2 through May 19, with the opening reception on May 2 from 5:30 - 8 pm. The artists will each be present and speak about their work starting at 5 pm.



### Case Hathaway-Zepeda

In Hathaway-Zepeda's film, *LB in Memory*, the protagonist faces the process of grieving while suspended in a collection of natural landscapes. The work explores the notion that reality continues to distort with each death.

Left: Case Hathaway-Zepeda, *LB in Memory*, 2013, video, 3:06 minutes.

### Paul Ishii

*Feel Free* reevaluates the processes of psychological diagnosis by mocking the self-help brochures found in health facilities and counseling centers. Ishii questions the idea that different or abnormal feelings should be considered an illness or disorder. He proposes alternative diagnoses, such as "that feeling you get when you see the sunset" or "what makes life beautiful."

Right: Paul Ishii, *Feel Free*, 2013, digitally printed brochures, 8.5 x 3.7 inches.



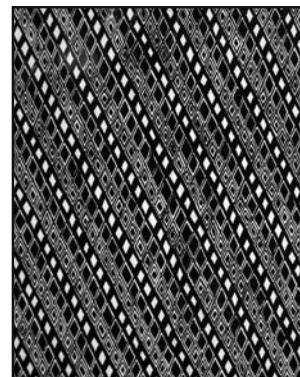
### Ryan Kish

These paintings explore the artist's interpretation of the world around him within a continuum of representation and abstraction. Kish's landscapes, painted in situ, include scenes of the interstate highway, marshland, neighborhoods, and office buildings in New Hampshire, close to where he grew up. These works are devoted to describing physical and architectural space. The abstract paintings that are produced in the studio unpack the artist's observational work and seek to depict that which he cannot see when he is painting outside.

Left: Ryan Kish, *Dormer*, 2013, oil on linen, 11 x 14 inches.

## Liza Lynch

*Asunder* examines the overlapping themes of collection and pattern, including ideas of accumulation, arrangement, obsession, and preciousness. Lynch creates paintings with small and intricate marks, organized in a particular fashion and neurotically repeated. These works speak to the stringent way collections can be displayed and the obsessive nature of collecting.



Right: Liza Lynch, *Cut Crystal Vial No. 1*, 2013, oil on panel, 12 x 16 inches.

## Vanessa Michalak



*The Great Escape*, a series of landscape paintings, developed from a synthesis of memories, photos, and imagination, reveals the transitory states of an artist's process. Varied color palettes and inventive paint application blend representation with abstraction developing seemingly familiar yet mysterious spaces. In these works, the artist escapes into the painting process and investigates its limitless capacities. The medium's innate qualities and artist's vision meld revealing a sense of both disaster and discovery.

Left: Vanessa Michalak, *On the Way Home*, 2013, oil on canvas, 24 x 30 inches.

## John Neylan

*End The Confusion* is an installation, drawing, and performance that explores American history through the lenses of the conspiracy theorist, the artist, the historian, and the hoarder. The artist began with the question proposed by Walter Benjamin in his final written piece, *Thesis on the Philosophy of History*: what are we to make of the endless pile of corpses that is a result of human history? An underlying faith in humanism emerges in Neylan's examination of these various approaches to history, but it comes with the caveat that it can also lead to a prison of the mind.



Right: John Neylan, *End the Confusion*, 2013, installation, 12 x 12 feet.



## D.M.H. R.I.C.H.M.O.N.D. x2

Following a stint at a covert convenience think tank, MFA candidate DMH Richmond invites you to experience the fruition of the trust's meditations. "Pop up Palace", *Talm Yom Good* will be open to visitors who can expect product promotions, freebies, contests, film screenings, celebrity guests, and franchise opportunities.

Left: D.M.H. R.I.C.H.M.O.N.D. X2, *Total Recall Live (Apocalyptic Talk Show)*, 2013, video, 23 minutes.

**PUBLIC OPENING RECEPTION**  
Thursday, May 2, 5:30 - 8:00pm  
Artists' Talks: 5:00pm

**GALLERY CONTACT: AMY SCHLEGEL**  
amy.schlegel@tufts.edu 617.627.3505

**GALLERY HOURS**  
Tuesday-Sunday 11am-5pm  
Thursdays 11am-8pm  
The Tufts University Art Gallery is fully  
accessible and admission is free.